



FMS™ TECH
FLEET MANAGEMENT SYSTEMS & TECHNOLOGIES

FMS DMS Robot

Meet **FMSTECH DMS**,
Our **Robot Road Safety Manager!**

Are you concerned about your **Road Safety**
ongoing-issues and don't know what to do?

Do you have issues with some of your drivers due to
their unsafe behavior and you would like to console
them but you don't know how? or you don't have the
resources or time to do it?

**NO WORRIES, FMSTECH Robot
is here to help!**

FMS DMS Robot Features

Connected to **FMSTECH** Fleet Management and
DMS portal, the **FMSTECH** Robot will collect data
on all your commercial vehicles and your drivers
performance.

Your drivers can access their individual reports using
their own personalized RFID access card from the
FMS Kiosk.

The Robot will analyze each driver performance and
improvise each driver in few minutes one-to-one
session between the Robot and your driver. The
Robot will address each driver in his name and speak
to the driver in English or in the driver own native
language as an option.

At the end of the feedback session, the Robot will
print the driver receipt with the total points the
driver could have earned and the total points he
actually earned based on his past driving behavior.
It is then up to you to decide which price or amount
of money, a driver can get when he redeems his
points with gift.

FMS DMS Robot will improve your Drivers
Behavior, encourage safe driving, Improve your Fleet
management tools, and Save you time and money.



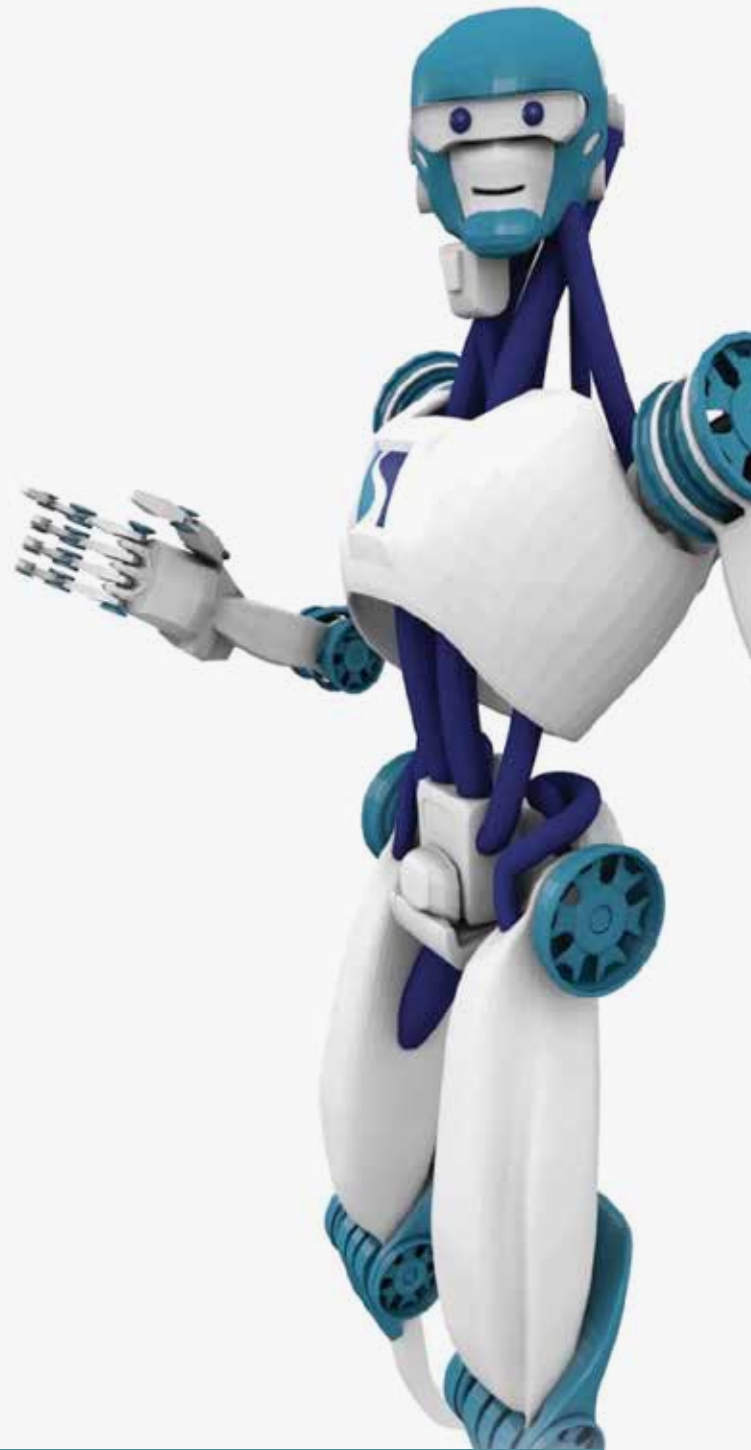
PRODUCT CODE: FMS-40000-000

US 20180218640 A1 (Patent Pending)



FMS Kiosk Computer Technical Specification

CPU:	I3 4170 3.7G
RAM:	DDR3 8GB ST500G - Kingston 8 GB
Graphic:	Discrete graphics display card - 2 GB
Operation system:	Microsoft Windows 10
LCD Size:	17-inch
LCD Type:	17-inch touch screen
LCD Resolution:	1280X1024
Printer:	EPSON thermal printer
Paper width:	80 mm paper width
Paper cutting:	Automatic cutting
RFID:	FMS Tech ISO dual chip card reader
Accessories:	17-inch metal baking rack luxury, with amplifier - speakers, USB, Ethernet ports, etc..
Power consumption:	200W
Power:	200V 10A
Box Size:	60 x 54 x 156 cm



CORPORATE OFFICES:

USA

Dallas - Texas
1400 Preston Road, #400
Plano, Texas 75093
Tel.: +1 (972) 665-9759
Fax.: +1 (972) 665-9915
usa@fms-tech.com

MIDDLE EAST

Abu Dhabi - UAE
Sky Tower #1304
Al Reem Island
Abu Dhabi, UAE
PO. Box 39366
Tel.: +971 2 6436640
Fax.: +971 2 6436642
uae@fms-tech.com

BRANCHES:

EUROPE

Belgrade - Serbia
Severni Bulevar 6,
Ehom Building,
Belgrade, Serbia
Tel.: +381 11 770 4148
Fax.: +381 11 208 3969
Mob.: +381 65 332 5772
europe@fms-tech.com

GCC

Muscat - Oman
Ghala Area, Way 5005,
Building 705, Office 24,
P.O. Box 2006 - PC 130
Muscat, Oman
Tel.: +968 24 222 490 / 91 / 92
Fax.: +968 24 222 493
oman@fms-tech.com

ASIA

Shenzhen - China
Gaochuangde Industrial Park
No. 6, 7th floor, Dalang Road,
Longhua District,
Shenzhen, China
Tel.: +86 755 25861609 - Ext: 606
Fax: +86 755 2586 1887
Mob.: +86 15919910983
asia@fms-tech.com
深圳市普隆科技有限公司
地址：深圳市龙华区大浪街道高
创德工业园6号A栋

AFRICA

Tunis - Tunisia
81, Av Khairreddine Pacha,
A8 Pacha Center
1073 - Montplaisir
Tunis, Tunisie
Tel.: +216 71 906 901
Fax: +216 71 908 989
GSM: +216 98 20 18 45
tunisia@fms-tech.com



fms-tech



fmstech



fmstech



fms.tech



FmsTechFleetManagementSystem